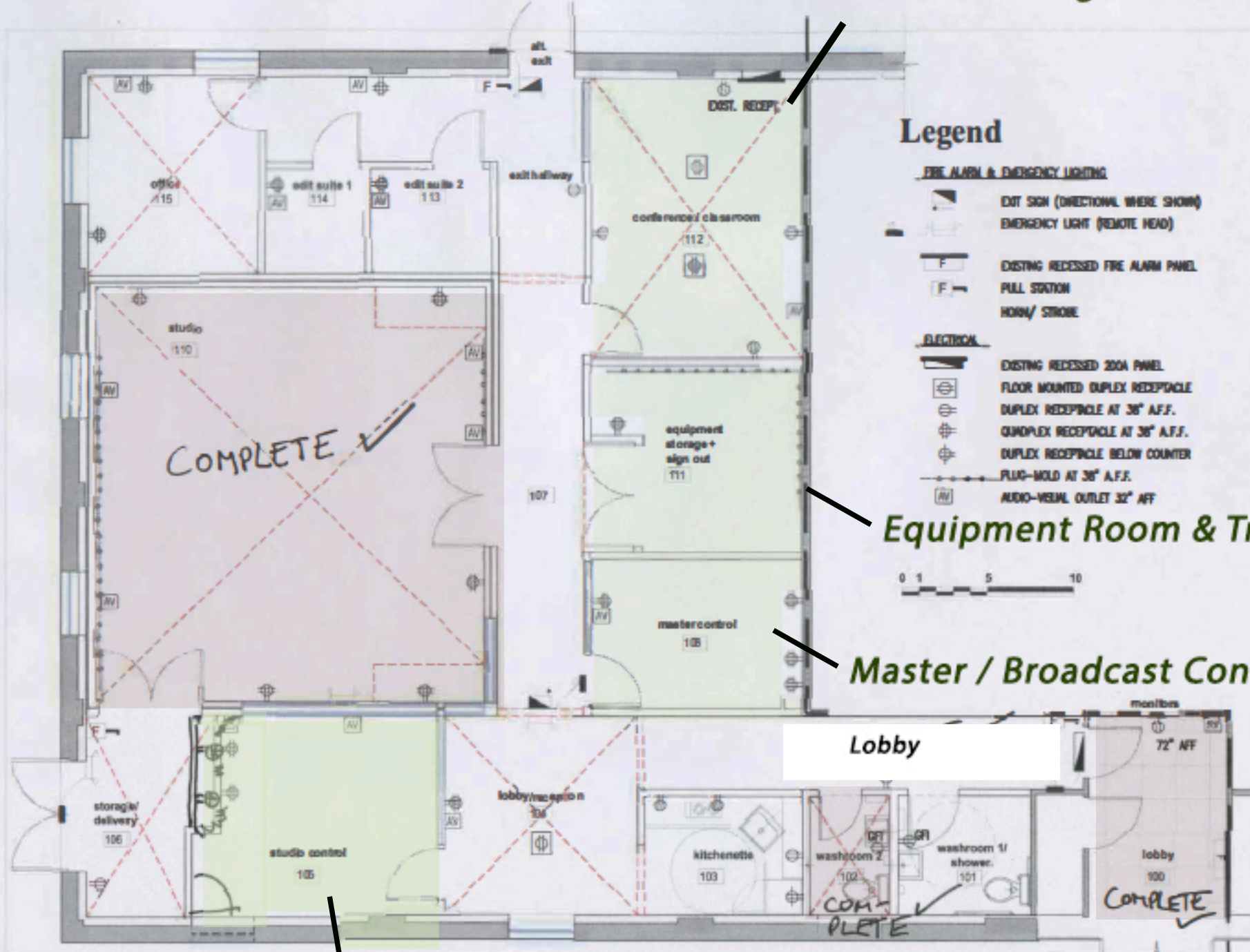


# Conference / Classroom ("Digital Learning Lab")



Copyright of Drawings  
 Drawings, notes and specifications described on this page are  
 instruments of service representing the concept and work created  
 by the office of Charles V. A. Architects PLLC (CV A) and  
 issued at the Project's last issuance. Copyright is retained by  
 CV A. Reproduction, transmission, copying, filing, posting,  
 modification or use in any form or by any means, including  
 electronic, is prohibited without the written consent of  
 CV A. The first copy, drawing and specification set  
 shall be made available to the client in writing. The  
 drawings of this Project, unless you receive approval of CV A,  
 shall not be used for any other project.

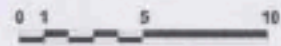
## Legend

### FIRE ALARM & EMERGENCY LIGHTING

- EXIT SIGN (DIRECTIONAL WHERE SHOWN)
- EMERGENCY LIGHT (REMOTE HEAD)
- EXISTING RECESSED FIRE ALARM PANEL
- PULL STATION
- HORN/STROBE

### ELECTRICAL

- EXISTING RECESSED 200A PANEL
- FLOOR MOUNTED DUPLEX RECEPTACLE
- DUPLEX RECEPTACLE AT 36" A.F.F.
- QUADPLEX RECEPTACLE AT 36" A.F.F.
- DUPLEX RECEPTACLE BELOW COUNTER
- PLUG-MOLD AT 36" A.F.F.
- AUDIO-VISUAL OUTLET 32" AFF



Equipment Room & Training Area

Master / Broadcast Control

Studio / Production Control Room & Training Area

**CV A**  
 CHARLES V. A. ARCHITECTS  
 PLLC

**LPCTV STUDIOS,  
 Ludlow, Vermont  
 Phase 2 Construction**

POWER PLAN  
 (WORKING DRAWINGS, PRICING ISSUE)

1/20/08 OR 2/1/11  
 AS NOTED

**E-121**